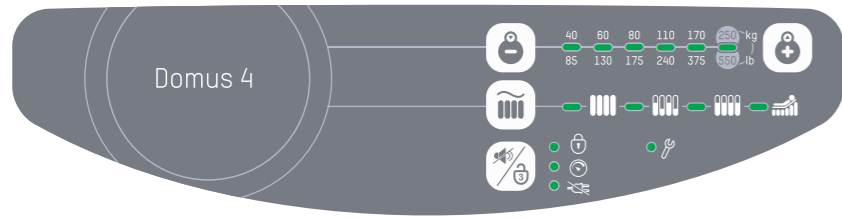


# Domus 4

## Alternating Pressure Redistribution System



### 5 Modes to Fulfill Individual Needs

- Max Firm
- Alternating
- Continuous Low Pressure (CLP)
- Seat Inflation w/ Alternating
- Seat Inflation w/ CLP



#### Alternating

Alternately inflates and deflates air cells allowing pressure redistribution and encourage tissue reperfusion.



#### Max Firm

A static firm surface for bursing procedures. It will automatically return to alternating mode after 20 minutes.



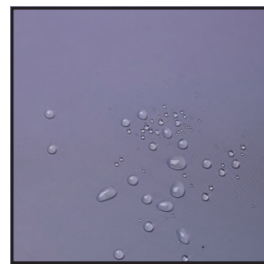
#### Constant Low Pressure (CLP)

Provides a constant static surface in lower pressure with a greater contact area for patients to be immersed and envelopes better.



#### Seat Inflation

Adjust the pressure to suit the patient in a sitting position. It can be used with alternating or CLP mode.



Biocompatibility



Vapour Permeable



Water Resistance



Flame Retardance

**4-Way Stretch Cover:** Low friction and shear cover with high moisture-vapour transmission rate for better microclimate management.



**Micro Low Air Loss:** Helps wick away moisture from the surface to keep patient's skin less susceptible to injuries.



**CPR Knob:** Designed for quick deflation in case of emergency and prevents accidental triggering.



**Heel Relief Function:** Individual detachable air cells prevent pressure injuries on the heels.



**Enhanced Cross-Infection Control:** Made with all-around-zipper and welded seams for easy removal and prevent fluid ingress.



**Cell-on-Cell Design:** The bottom cells prevent the patient from bottoming out in case of power failure.

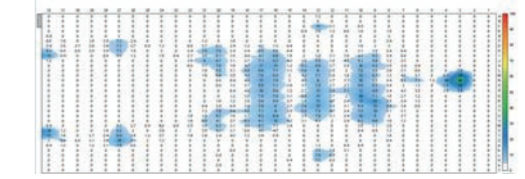


**Quick Connector with Cap:** Facilitates system installation and seals the mattress for patient transportation up to 8 hours.

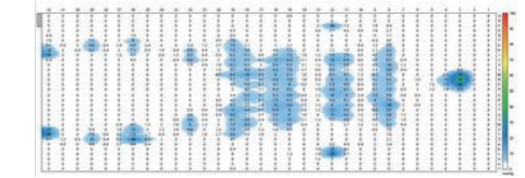


Patient: 170 cm / 80 kg / Male

Inflation of A cells



Inflation of B cells



### Pump Specifications

|                 |                                      |
|-----------------|--------------------------------------|
| Dimensions      | 29 x 18.5 x 12.6 cm                  |
| Weight          | 2.2 kg                               |
| Case Material   | Flame Retardant ABS                  |
| Supply Voltage  | AC 220 - 240, 50Hz; 100 - 120V, 60Hz |
| Operating Cycle | 10 mins                              |

### Mattress Specifications - 8" Replacement

|                           |                     |
|---------------------------|---------------------|
| Dimensions                | 200 x 90 x 20.3 cm  |
| Alternating               | 1 - in - 2          |
| Cell Height               | 20 x 8" Cells       |
| Weight                    | 6.9 kg              |
| Cover Material            | Silver Nylon/PU*    |
| Cell Material             | Nylon / TPU         |
| Maximum Patient Weight    | 250 kg              |
| Flame Retardant Standards | EN 597-1 & EN 597-2 |

\* Narrow sizes (85cm in width) is also available.



### Inspire Community Trust

Unit 21, Optima Park,  
Thames Road, Crayford,  
Kent, DA1 4QX

T: 01322 520560  
enquiry@inspiremedicare.org  
www.inspirecommunitytrust.org

All rights reserved Specifications may change without notice.

Inspire Community Trust are a distributor of Apex Medical products.

CE